



Model

DFF1-UHD

NETWORK FISH FINDER



NEW



Broadband Transducers



CM265LH

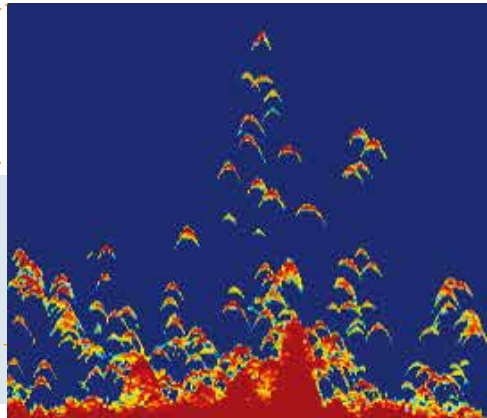
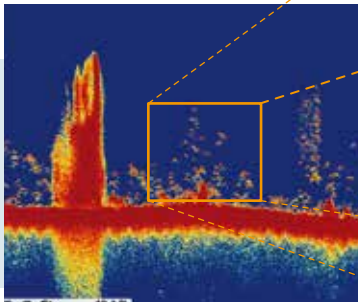


B265LH

Find More Fish With TruEcho CHIRP™ Fish Finder

An advanced technology for professional or enthusiastic fisherman. Designed to operate over a broadband range of frequencies utilizing a broadband transducer, the TruEcho CHIRP™ network sounder DFF1-UHD delivers significant advancements in signal clarity and target definition. The clear presentation of the sounder marks individual game fish and bait fish, even when tightly schooled together.

- Designed to operate over a broadband range of frequencies utilizing a broadband transducer
- Clear presentation separates bottom structure from bottom fish, and bait fish from game fish
- Network fish finder works with NavNet 3D & NavNet TZtouch*

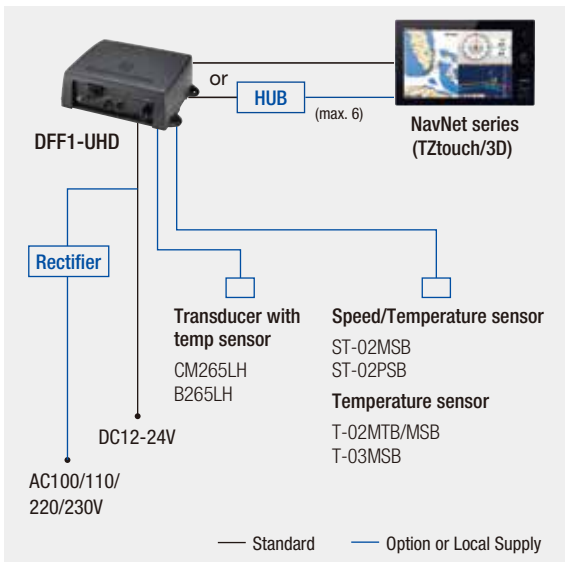


*System version requirement for NavNet series:
 NavNet TZtouch (TZT9/TZT14)
 - version 3.xx or later - Upcoming update in Spring 2013
 NavNet 3D (MFD8/MFD12/MFDBB)
 - Upcoming update to be announced

DFF1-UHD provides easy reading of:

- Density of fish school
- Bottom contours
- Discrimination of single fish close to bottom
- Marks individual game fish and bait fish, even when tightly schooled together

Interconnection Diagram

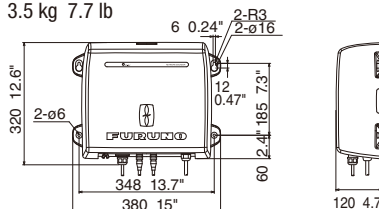


Comparison Among Network Sounder Series

MODEL	DFF1-UHD	DFF1	BBDS1	DFF3
Frequency	50±20&200±25 kHz	50, 200, or 50&200 kHz	50&200 kHz	Selectable(28 to 200 kHz)
Output Power	1 kW	600W/1 kW	600 W/1 kW	1/2/3 kW
Ultra High Definition (CHIRP)	Available	N/A	N/A	N/A
ACCU-FISH	Available (Advanced)	Available	Available	Available (only 50/200-1T)
Bottom Discrimination	Available (Advanced)	N/A	Available	N/A
Waterproof	IP22	IP20	IP20	IP20
Connection	NavNet 3D/ NavNet TZtouch	NavNet vx2/NavNet 3D/ NavNet TZtouch	NavNet 3D/ NavNet TZtouch	NavNet vx2/NavNet 3D/ NavNet TZtouch

Dimension

3.5 kg 7.7 lb



SPECIFICATIONS SUBJECT TO CHANGE WITHOUT NOTICE
 All brand and product names are registered trademarks, trademarks or service marks of their respective holders